

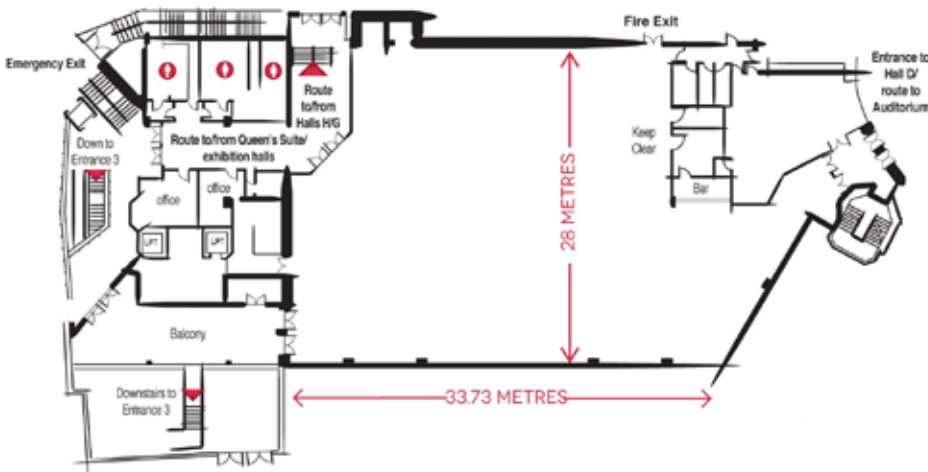
HALL D

Benefitting from excellent natural daylight, this hall acts as an ideal central hub linking Auditorium with the rest of the complex.

TOTAL AREA: 1050M² CAPACITY: 450 - 800



A great space for banqueting and awards ceremonies, Hall D works equally well as additional meeting or poster display areas, when used in conjunction with the Queen's Suite and Auditorium meeting spaces. This versatile hall can also be deployed as exhibition space or an event registration area.



SPECIFICATION

Dimensions

TOTAL AREA:	1050M²
LENGTH:	33.73M
WIDTH:	28M
HEIGHT:	2.9M LOWEST

Access

MAX ACCESS HEIGHT:	2.43M
MAX ACCESS WIDTH:	1.90M
OWN ENTRANCE:	YES

Capacity Examples

THEATRE STYLE:	800
CABARET:	450
BANQUET:	650