

STUDIO TWO

Opened with Studio One in 2011, this large versatile space offers 1436sqm in which to house your exhibition, conference or gala dinner.

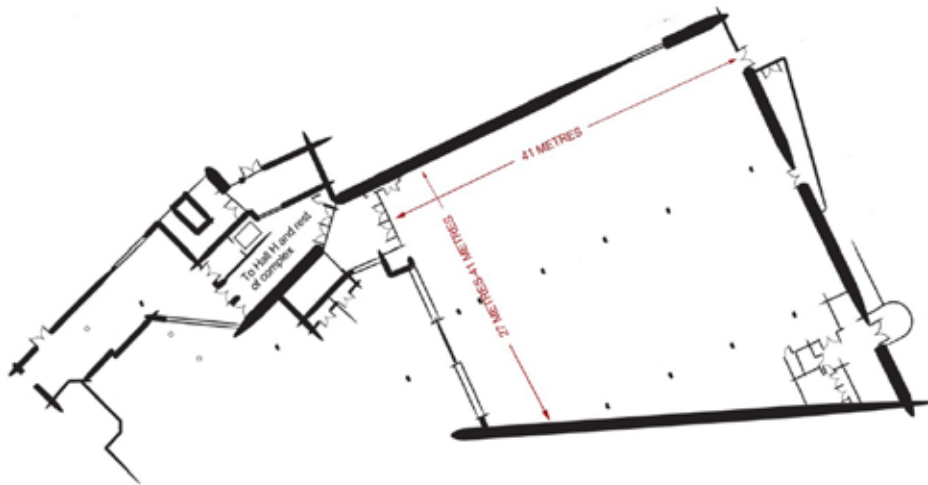
TOTAL AREA: 1436M²



Both Studio One and Studio Two are easily accessed from our main reception area and 2000-seat Auditorium.

Studio Two is directly underneath Studio One and both can be reached by lift or stairs. There is internal access to the neighbouring Premier Inn.

The hall can easily accommodate large exhibition stands and vehicles thanks to its high ceiling.



SPECIFICATION

Dimensions

TOTAL AREA:	1436M²
LENGTH:	41M
WIDTH:	27-41M
HEIGHT:	4.35-5M

Access

MAX ACCESS HEIGHT:	4.35M
MAX ACCESS WIDTH:	5.90M
OWN ENTRANCE:	YES