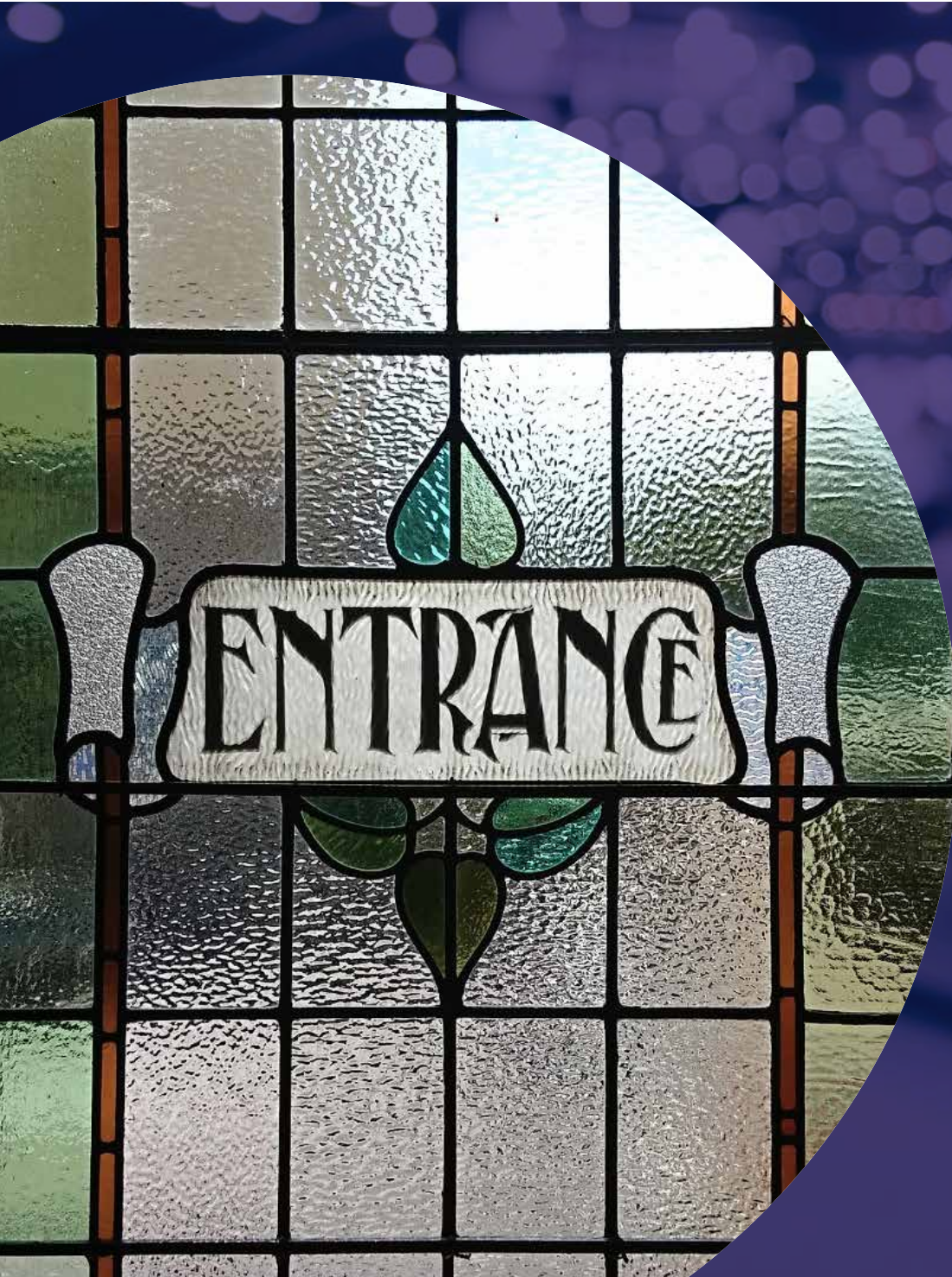




# HARROGATE

— CONVENTION CENTRE —

HOME OF EVENTS SINCE 1835





# HARROGATE CONVENTION CENTRE



## WELCOME HOME

- Over 13,000 sqm of event space
- 2000-seat conference auditorium
- 1000-seat historic Royal Hall theatre
- Dedicated technical experts and experienced event professionals
- Huge range of catering options, including banquets and dinners
- 10 flexible exhibition halls with break-out options
- Easily accessible by road, rail and air
- More than 2000 local hotel rooms including 500 on site



TO FIND OUT MORE OR TO BOOK  
YOUR SITE VISIT CALL

01423 537 474



[WWW.HARROGATECONVENTIONCENTRE.CO.UK](http://WWW.HARROGATECONVENTIONCENTRE.CO.UK)

 **HARROGATE**  
CONVENTION CENTRE



# HARROGATE

When you bring your event to our venue you're bringing it to one of the most vibrant, welcoming and attractive towns in England.



Harrogate Convention Centre is in the centre of town, a few minutes' walk from terrific restaurants, bars, cafes and hotels, all ideal for after-hours networking and corporate hospitality.

We have a tremendous range of independent outlets such as Major Tom's and the world famous Bettys Tea Room, to big name brands such as Jamie Oliver, Carluccio and Gino D'Acampo.

We even have our very own branch of The Ivy opening in 2018.

When it comes to accommodation we have more than 2000 hotel beds in town including 500 on site at The Majestic, Premier Inn and the newly refurbished Crowne Plaza.

All visitors to Harrogate Convention Centre can take advantage of our delegate discount scheme, including offers of up to 25% off your bill at a range of businesses in town.

# HARROGATE

In the centre of the UK we are only 20 minutes from two major road networks and Leeds/Bradford Airport.



## ROAD

### Using Sat Nav

For Sat Nav use these postcodes:

Jubilee Car Park – HG1 1DJ

Victoria Car Park – HG1 5LQ

Springfield Car Park – HG1 2HR

### From the South

21 minutes from the A1. Take the M1 and A1(M) before leaving at Junction 45 (Wetherby) then take the A661 to Harrogate. Alternatively continue on the A1(M) to Junction 47 (Knaresborough) then follow signs to Harrogate.

### From the North

24 minutes from the A1. Take the A1(M) and exit at Junction 47 (Knaresborough) then follow signs to Harrogate.

## RAIL

We are linked to all major UK cities via Leeds (34 minutes) and York (33 minutes) including a direct, daily connection to London (3 hours). The quickest journey time from London is 2 hours 43 minutes changing at York.

Get 25% off your rail tickets when coming to an event at Harrogate Convention Centre and travelling by Virgin East Coast.

The Virgin East Coast discount is available on all advance tickets. The only condition is that passengers with discounted tickets must have their Harrogate Convention Centre event ticket with them while on board the train, otherwise you will be charged excess fare.

From May 2019, Virgin East Coast will run seven return trains per day between Harrogate and London.

## AIR

At 12 miles (20 minutes) the closest airport to Harrogate Convention Centre is Leeds/Bradford International (LBA). British Airways run daily flights between LBA and Heathrow (1 hour), and there are regular flights from many connections worldwide, including Paris (90 minutes), Amsterdam (70 minutes), Dublin (60 minutes) and Scandinavia.

To get from LBA to Harrogate, take the Airport Direct 747 bus which runs hourly and will drop you off at Harrogate's main bus station, from there it's a five minute walk to the Convention Centre.

Alternatively a taxi will take about 20 minutes and cost around £25.

If you are travelling from a destination without direct flights to LBA, consider a connection from Schiphol, Amsterdam.



# HARROGATE

Springfield car park is underneath the Auditorium with around 158 spaces and a number of spaces for Blue Badge holders. The entrance is on Springfield Avenue and perfect for events using Entrances 1, 2 and 3.



## PARKING

You will find 1200 spaces at Jubilee and Victoria car parks in the centre of Harrogate just a few minutes' walk from the Convention Centre and Royal Hall.

Jubilee car park is the closest at just three minutes' walk from Entrance 4 (Hall M), Royal Hall and Entrance 5 (Hall A).

Walking from Victoria Car Park next to the Railway Station will take around ten minutes' to Entrances 4, 5 and Royal Hall or twelve minutes' from West Park.

If you're attending a large fair or exhibition, there may be a Park & Ride service or shuttle bus in operation. These services are provided by the organisers of each event and we recommend checking your event's website for details. (Please note these websites are external to Harrogate Convention Centre and we are not responsible for their content).

If you are exhibiting, please call Reception on 01423 500500 to discuss your individual requirements and we will work with you to find the best solution to make sure your needs are met. Special parking rates may also be available for those leaving their vehicle for more than one day in Springfield car park. Please call us on 01423 537474 for more details.

We also have 180 parking spaces specifically for contractors on Dragon Road.

### Using Sat Nav

For Sat Nav use these postcodes:

Jubilee Car Park – HG1 1DJ

Victoria Car Park – HG1 5LQ

Springfield – HG1 2HR

Please remember to check closing times of your car park if you are intending to stay late as vehicles locked in car parks will be charged a release fee.

### Charges

Charges for Springfield car park are:

#### Daytime

Up to 3 hours	£4.00
Up to 6 hours	£7.50
Up to 12 hours	£11.50
24 hours	£13.00

#### Evening (from 6pm)

Entertainments £2.00  
(for performances at the Convention Centre and Royal Hall)

For more details, including terms and conditions, go to [www.harrogateconventioncentre.co.uk/visitors/getting-here](http://www.harrogateconventioncentre.co.uk/visitors/getting-here)

# AUDITORIUM

Our spectacular showcase Auditorium accommodates almost 2000 people. Featuring zoned lighting and flexible seating arrangements, it is perfect for a range of events and audiences.

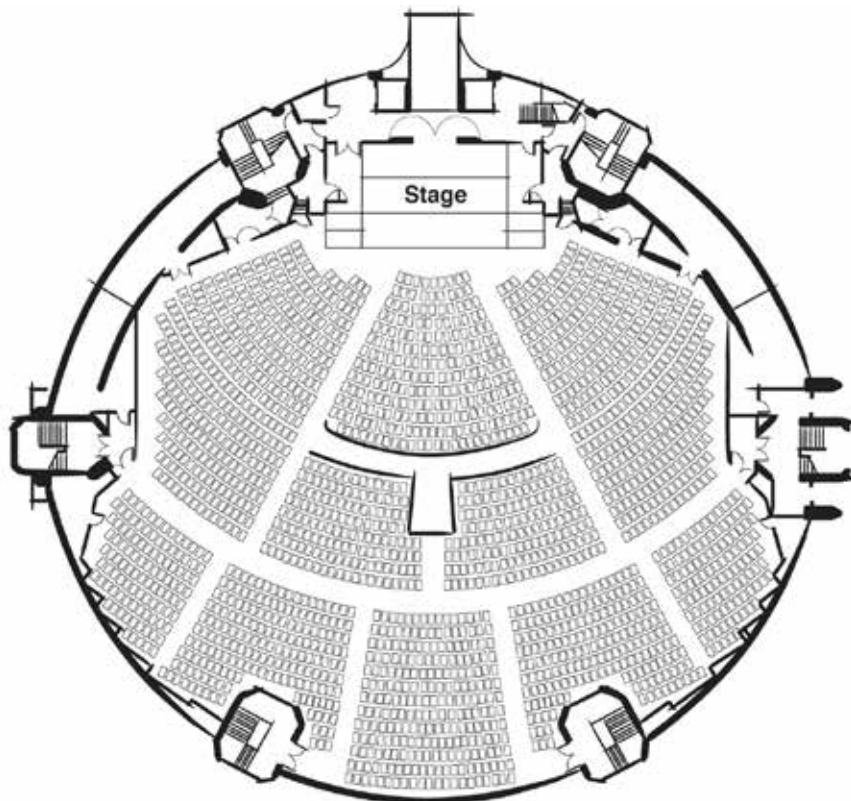
**TOTAL AREA: 350M<sup>2</sup> CAPACITY: 320 - 1977**



550 seats are removable to create a bigger stage or flat floor area of up to 350sqm; ideal for cabaret style events or events requiring a larger platform.

We are passionate about attention to detail, which means we've thought of everything. Here, you'll benefit from the very latest technology and our seats were designed with your delegates' comfort in mind.

This versatile climate controlled auditorium boasts superb technical facilities, a stunning entrance foyer and several smaller seminar spaces. It has a permanent stage and inclusive AV package supported by three technicians and large front projection screen.



## SPECIFICATION

### Dimensions

**TOTAL AREA:** 350M<sup>2</sup>

### Access

**MAX ACCESS HEIGHT:** 3.70M

**MAX ACCESS WIDTH:** 3M

**OWN ENTRANCE:** YES

### Capacity Examples

**THEATRE STYLE:** 1977

**CABARET:** 320

**BANQUET:** 400



# ROYAL HALL

This stunning Edwardian theatre is the jewel in Harrogate's crown.

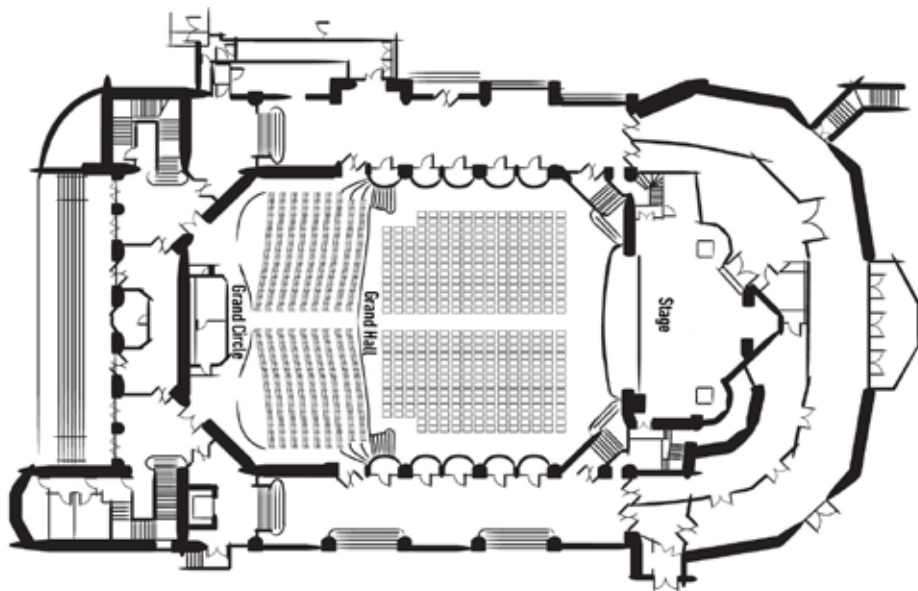
Built in 1903 by Frank Matcham as a multi-purpose entertainment space for the rich and famous visitors to Harrogate's spa, this magnificent building is the definitive location for an unforgettable event.

**TOTAL AREA: 347M<sup>2</sup> CAPACITY: 250 - 978**



The breathtaking interior design is derived from the great ballrooms of imperial Europe combined with British theatrical elements and with almost a thousand seats it's the perfect 'wow' venue. Royal Hall comes with its own technical package and up to three dedicated technical staff.

The Hall's richly detailed architecture, proscenium arch stage and excellent acoustics make it ideal for all manner of theatre, concerts, recitals, tea dances, dinners, conferences and seminars.



## SPECIFICATION

### Dimensions

<b>TOTAL AREA:</b>	<b>347M<sup>2</sup></b>
<b>LENGTH:</b>	<b>18M</b>
<b>WIDTH:</b>	<b>21M</b>

### Access

<b>MAX ACCESS HEIGHT:</b>	<b>2M</b>
<b>MAX ACCESS WIDTH:</b>	<b>2M</b>
<b>OWN ENTRANCE:</b>	<b>YES</b>

### Capacity Examples

<b>THEATRE STYLE:</b>	<b>978</b>
<b>CABARET:</b>	<b>250</b>
<b>BANQUET:</b>	<b>340</b>

# STUDIO ONE

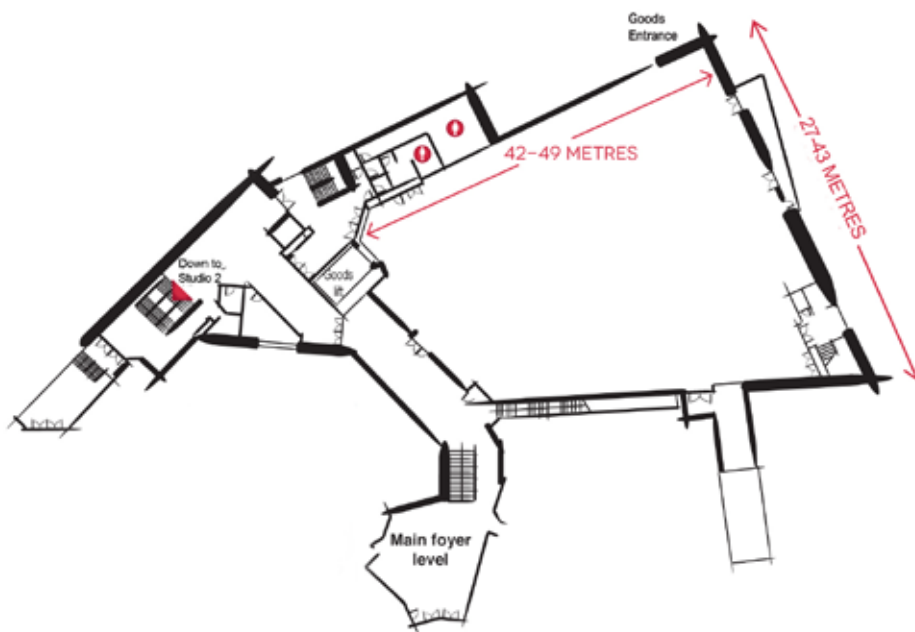
Studio One is our newest event space and already one of the most popular thanks to its versatility and size.

**TOTAL AREA: 1592M<sup>2</sup> CAPACITY: 840 - 1200**



Offering 1592sqm Studio One has been used for exhibitions, major conferences, award ceremonies and banquets. In 2014 it was populated by the world's press as a media hub when the *Tour de France* came through Harrogate.

The hall has its own off-road direct vehicle access and 'Flowcrete' flooring makes it tough and smart enough to go without carpeting should you wish.



## SPECIFICATION

### Dimensions

TOTAL AREA:	1592M <sup>2</sup>
LENGTH:	42-49M
WIDTH:	27-43M
HEIGHT:	5.85M

### Access

MAX ACCESS HEIGHT:	4.90M
MAX ACCESS WIDTH:	3.40M
OWN ENTRANCE:	YES

### Capacity Examples

THEATRE STYLE:	1200
CABARET:	840
BANQUET:	1000



# STUDIO TWO

Opened with Studio One in 2011, this large versatile space offers 1436sqm in which to house your exhibition, conference or gala dinner.

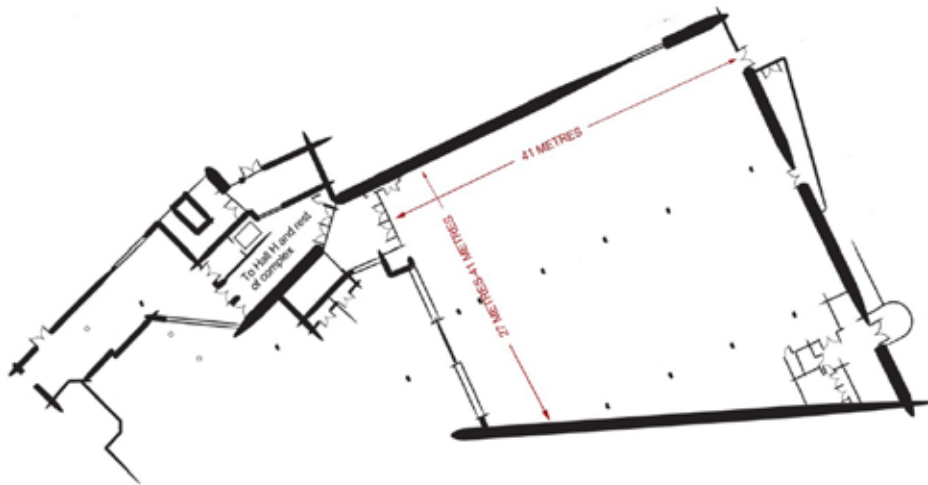
**TOTAL AREA: 1436M<sup>2</sup>**



Both Studio One and Studio Two are easily accessed from our main reception area and 2000-seat Auditorium.

Studio Two is directly underneath Studio One and both can be reached by lift or stairs. There is internal access to the neighbouring Premier Inn.

The hall can easily accommodate large exhibition stands and vehicles thanks to its high ceiling.



## SPECIFICATION

### Dimensions

<b>TOTAL AREA:</b>	<b>1436M<sup>2</sup></b>
<b>LENGTH:</b>	<b>41M</b>
<b>WIDTH:</b>	<b>27-41M</b>
<b>HEIGHT:</b>	<b>4.35-5M</b>

### Access

<b>MAX ACCESS HEIGHT:</b>	<b>4.35M</b>
<b>MAX ACCESS WIDTH:</b>	<b>5.90M</b>
<b>OWN ENTRANCE:</b>	<b>YES</b>

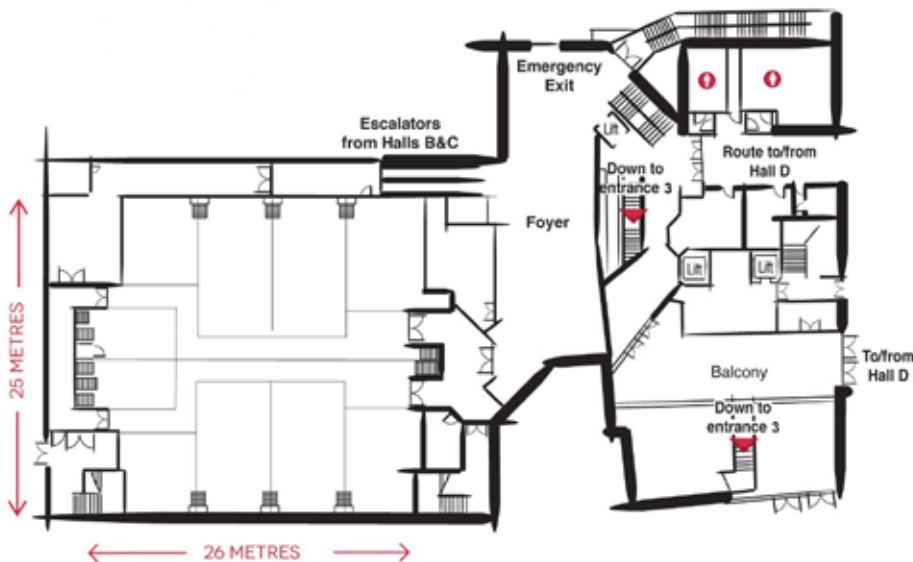
# QUEEN'S SUITE

This incredible, flexible 650sqm area can be used as one space or sub-divided into up to ten individual, yet acoustically secure rooms.

**TOTAL AREA: 650M<sup>2</sup> CAPACITY: 400 - 600**

Queen's Suite works perfectly as breakout spaces when used alongside the rest of the Convention Centre, but with its own entrance foyer and lounge area, it also makes a great stand-alone space.

The Queen's Suite comes complete with a technical package including a dedicated technician and large 16:9 front projection screen.



## SPECIFICATION

### Dimensions

TOTAL AREA:	650M <sup>2</sup>
LENGTH:	25M
WIDTH:	26M
HEIGHT:	3.9M

### Access

MAX ACCESS HEIGHT:	2M
MAX ACCESS WIDTH:	1.90M
OWN ENTRANCE:	YES

### Capacity Examples

THEATRE STYLE:	600
CABARET:	400
BANQUET:	450



# KING'S SUITE

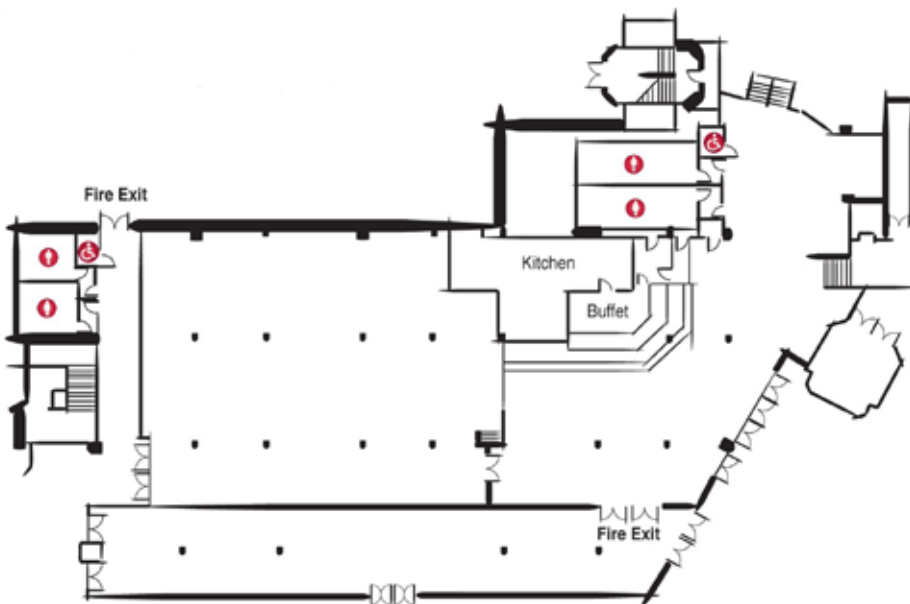
The King's Suite is perfect if you're looking for a professional and intimate space for your event.

**TOTAL AREA: 425M<sup>2</sup> CAPACITY: 120 - 220**



At around 425sqm, the King's Suite can seat up to 220 people theatre style, ideal for smaller AGM's, seminars, briefings, breakout or conferences.

This suite is versatile, comes with its own entrance and is the perfect self-contained space for your event.



## SPECIFICATION

### Dimensions

<b>TOTAL AREA:</b>	<b>425M<sup>2</sup></b>
<b>LENGTH:</b>	<b>24.36M</b>
<b>WIDTH:</b>	<b>18.3M</b>
<b>HEIGHT:</b>	<b>2.6M</b>

### Access

<b>MAX ACCESS HEIGHT:</b>	<b>1.90M</b>
<b>MAX ACCESS WIDTH:</b>	<b>1.60M</b>
<b>OWN ENTRANCE:</b>	<b>YES</b>

### Capacity Examples

<b>THEATRE STYLE:</b>	<b>220</b>
<b>CABARET:</b>	<b>120</b>

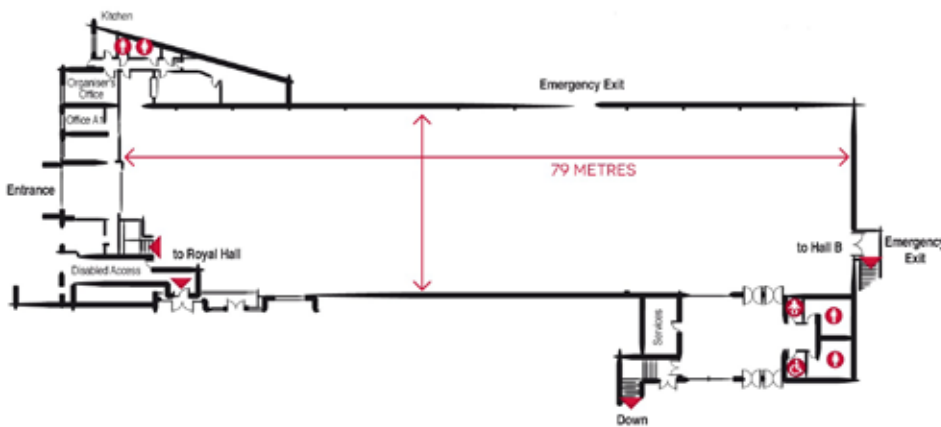
# HALLA

The key features of this event space include a dedicated entrance, reception, cloakroom and comprehensive suite of organisers' offices.

**TOTAL AREA: 1600M<sup>2</sup> CAPACITY: 1200**



Supremely flexible, Hall A can be used as exhibition space or dressed to accommodate 1200 for a gala dinner. If it's extra space you need this hall has direct access to both the stunning Royal Hall and Hall B, which in turn, link to the rest of the Convention Centre complex.



## SPECIFICATION

### Dimensions

<b>TOTAL AREA:</b>	<b>1600M<sup>2</sup></b>
<b>LENGTH:</b>	<b>79m</b>
<b>WIDTH:</b>	<b>20.19m</b>
<b>HEIGHT:</b>	<b>2.75m-6.4m</b>

### Access

<b>MAX ACCESS HEIGHT:</b>	<b>4.13M</b>
<b>MAX ACCESS WIDTH:</b>	<b>4.04M</b>
<b>OWN ENTRANCE:</b>	<b>YES</b>

### Capacity Examples

<b>THEATRE STYLE:</b>	<b>1200</b>
<b>CABARET:</b>	<b>840</b>
<b>BANQUET:</b>	<b>1200</b>



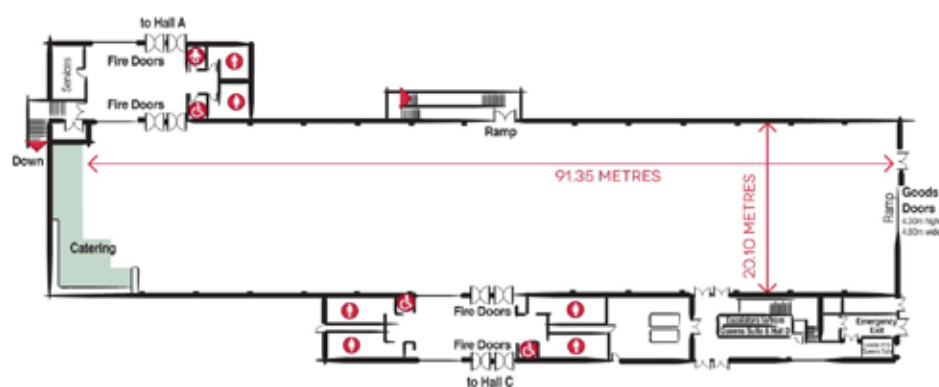
# HALL B

Hall B's retail catering facilities complement its 1815sqm floor space, making it suitable for exhibitions and large banquets.

**TOTAL AREA: 1815M<sup>2</sup> CAPACITY: 1200**



Internal access improvements mean the hall boasts great visitor flow to adjoining event spaces Hall A and Hall C. This hall also has easy access to the Queen's Suite via lift and escalators.



## SPECIFICATION

### Dimensions

<b>TOTAL AREA:</b>	<b>1815M<sup>2</sup></b>
<b>LENGTH:</b>	<b>91.35M</b>
<b>WIDTH:</b>	<b>20.10M</b>
<b>HEIGHT:</b>	<b>2.79 TO 4M</b>

### Access

<b>MAX ACCESS HEIGHT:</b>	<b>4.30M</b>
<b>MAX ACCESS WIDTH:</b>	<b>4.80M</b>
<b>OWN ENTRANCE:</b>	<b>NO</b>

### Capacity Examples

<b>THEATRE STYLE:</b>	<b>1500</b>
<b>CABARET:</b>	<b>980</b>
<b>BANQUET:</b>	<b>1200</b>

# HALL C

With a floor space of 1853sqm, direct access into both Halls B and M, Hall C is a perfect space for larger exhibitions.

**TOTAL AREA: 1853M<sup>2</sup> CAPACITY: 1200**



This area offers an integral public catering outlet which was completely revamped and upgraded in 2014.

Hall C also interconnects with the Queen's Suite meeting space, making it ideal for an accompanying exhibition, delegate catering area or awards dinner.



## SPECIFICATION

### Dimensions

<b>TOTAL AREA:</b>	<b>1853M<sup>2</sup></b>
<b>LENGTH:</b>	<b>95.6M</b>
<b>WIDTH:</b>	<b>20.19M</b>
<b>HEIGHT:</b>	<b>2.79-4M</b>

### Access

<b>MAX ACCESS HEIGHT:</b>	<b>4.18M</b>
<b>MAX ACCESS WIDTH:</b>	<b>4.82M</b>
<b>OWN ENTRANCE:</b>	<b>NO</b>

### Capacity Examples

<b>THEATRE STYLE:</b>	<b>1500</b>
<b>CABARET:</b>	<b>210</b>
<b>BANQUET:</b>	<b>1200</b>



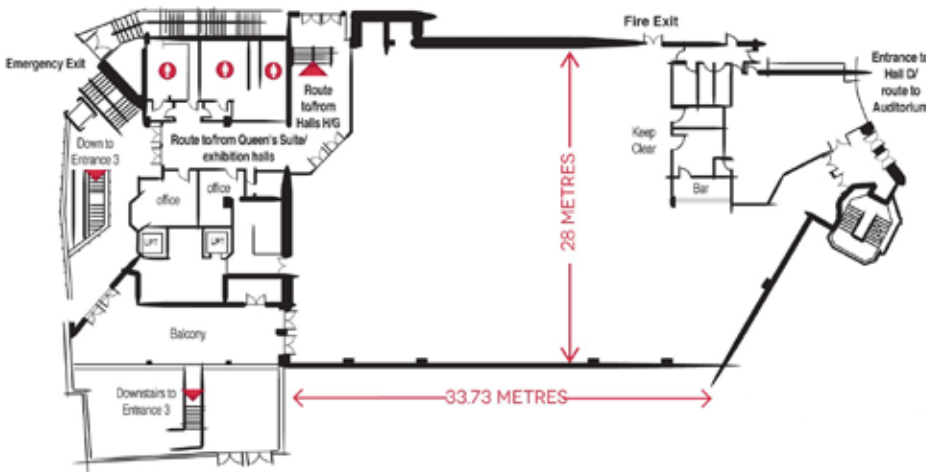
# HALL D

Benefitting from excellent natural daylight, this hall acts as an ideal central hub linking Auditorium with the rest of the complex.

**TOTAL AREA: 1050M<sup>2</sup> CAPACITY: 450 - 800**



A great space for banqueting and awards ceremonies, Hall D works equally well as additional meeting or poster display areas, when used in conjunction with the Queen's Suite and Auditorium meeting spaces. This versatile hall can also be deployed as exhibition space or an event registration area.



## SPECIFICATION

### Dimensions

<b>TOTAL AREA:</b>	<b>1050M<sup>2</sup></b>
<b>LENGTH:</b>	<b>33.73M</b>
<b>WIDTH:</b>	<b>28M</b>
<b>HEIGHT:</b>	<b>2.9M LOWEST</b>

### Access

<b>MAX ACCESS HEIGHT:</b>	<b>2.43M</b>
<b>MAX ACCESS WIDTH:</b>	<b>1.90M</b>
<b>OWN ENTRANCE:</b>	<b>YES</b>

### Capacity Examples

<b>THEATRE STYLE:</b>	<b>800</b>
<b>CABARET:</b>	<b>450</b>
<b>BANQUET:</b>	<b>650</b>

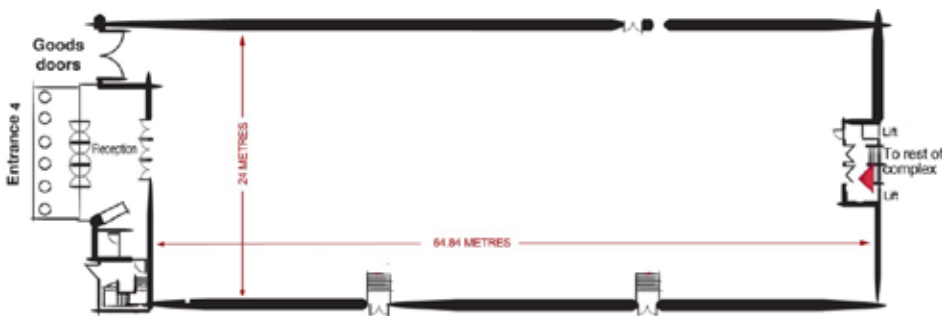
# HALL M

With its grand main entrance featuring imposing Doric columns (referencing the original Spa Rooms of 1835) leading into a large reception area, this hall is ideally placed for easy public access being the closest of all Convention Centre halls to the town centre.

**TOTAL AREA: 1560M<sup>2</sup> CAPACITY: 910 - 1100**



Incorporating its own dedicated offices and reception area, Hall M is the perfect self-contained space for exhibitions or presentations. It is directly interlinked to both the Royal Hall and Hall C for those events needing a larger space and with a ceiling height of around 8m it's perfect for larger exhibits and ambitious space only stand designers.



## SPECIFICATION

### Dimensions

<b>TOTAL AREA:</b>	<b>1560M<sup>2</sup></b>
<b>LENGTH:</b>	<b>64.84M</b>
<b>WIDTH:</b>	<b>24M</b>
<b>HEIGHT:</b>	<b>8M</b>

### Access

<b>MAX ACCESS HEIGHT:</b>	<b>4.50M</b>
<b>MAX ACCESS WIDTH:</b>	<b>4.20M</b>
<b>OWN ENTRANCE:</b>	<b>YES</b>

### Capacity Examples

<b>THEATRE STYLE:</b>	<b>1480</b>
<b>CABARET:</b>	<b>910</b>
<b>BANQUET:</b>	<b>1100</b>



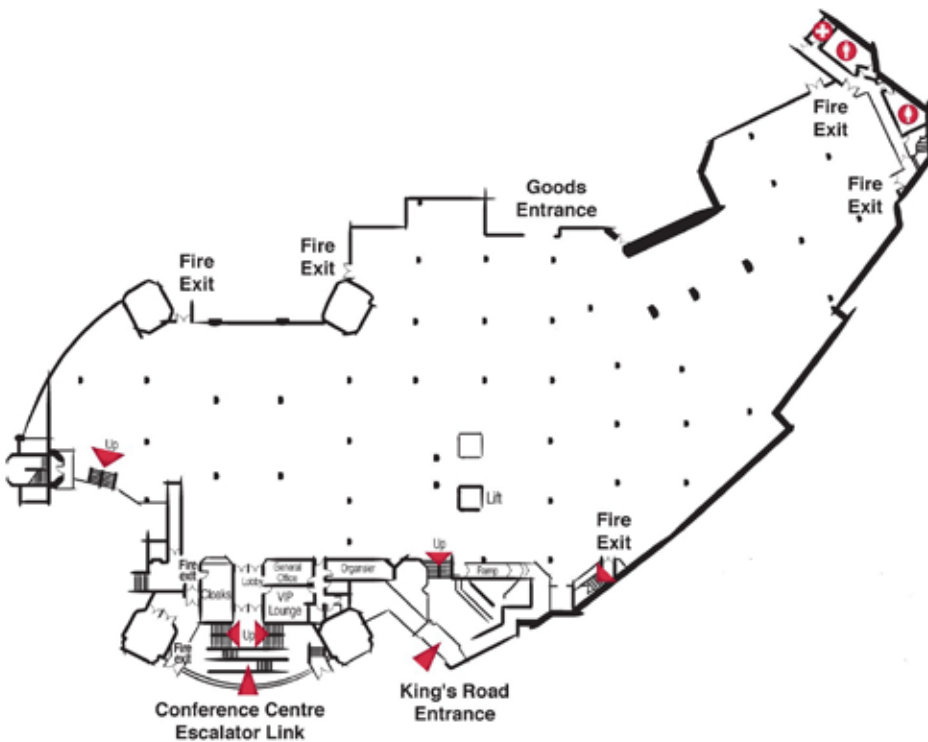
# HALL Q

Having recently undergone refurbishment, Hall Q offers event organisers 3285sqm.



**TOTAL AREA: 3285M<sup>2</sup>**

This hall benefits from its own dedicated entrance, registration area and suite of organisers' offices and makes a great stand alone space. It works equally as well as an exhibition or catering area when used in conjunction with the Auditorium.



## SPECIFICATION

### Dimensions

<b>TOTAL AREA:</b>	<b>3285M<sup>2</sup></b>
<b>LENGTH:</b>	<b>105M</b>
<b>WIDTH:</b>	<b>25-39M</b>
<b>HEIGHT:</b>	<b>2.4-3.3M</b>

### Access

<b>MAX ACCESS HEIGHT:</b>	<b>2.36M</b>
<b>MAX ACCESS WIDTH:</b>	<b>3.45M</b>
<b>OWN ENTRANCE:</b>	<b>YES</b>

# KUDOS 'WE BRING THE KNOW HOW'



Kudos are our award winning catering partner. Creative Director, Daniel Clifford, encourages innovation and well balanced menus, where possible, sourcing regionally from approved suppliers to ensure optimum freshness, taste and environmental responsibility.

The team cater for everything from retail public and stand catering to VIP hospitalit, drinks receptions and sophisticated glittering dinners. Kudos will work closely with you to develop a menu to suit all tastes and budgets.

